

DC-NH Fuse-Rail 1200 V, 2-pole, for line protection in photovoltaic systems

Special DC NH fuse-links are often used to protect joint strings in DC collectors. The type-approved DC NH fuse-rails made by Efen represent a disconnecting point based on the proved busbar technology. The compact components save time and space during installation.



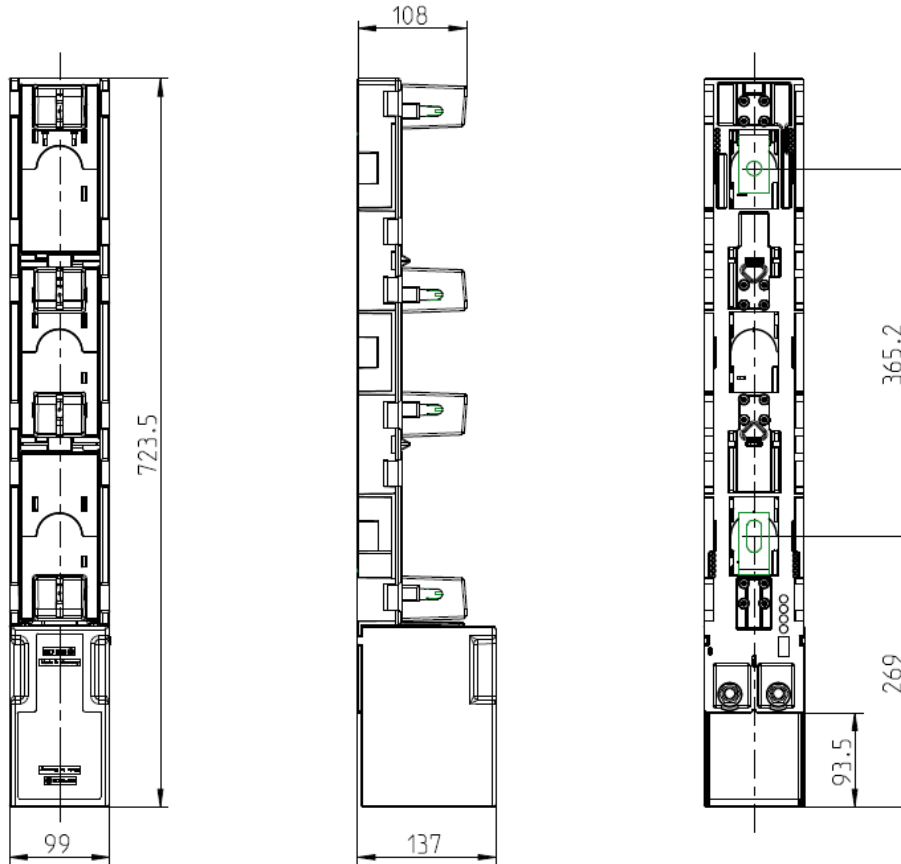
- **Space-saving and quick installation:**
Thanks to their proven rail design, the devices can be installed at a spacing of 100 mm.
- **Approved quality:**
The DC NH fuse-rails are type-approved with 30 kA according to IEC IEC60269-1 and -2.
- **Optimised protection against contact:**
The safety cover available as an option can be quickly installed to provide protection at the front against contact with live parts according to IP 2X.

The halogen-free plastic material is self-extinguishing and resistant to the high temperatures occurring in DC collectors.

DC NH Fuse-Rail 1200 V, size 2XL / 3L, 2-pole, with contact and terminal space cover					
Description	Size	Amps	Order no.	PU	PG
NH-LEI 2XL/3L 2P 1200VDC 400A SH S6	2XL / 3L	400	38954-0030	1	PV
Safety cover for PV rail			36837-0010		

DC-NH Fuse-Rail 1200 V, 2-pole, for line protection in photovoltaic systems

Dimension drawing:



DC-NH Fuse-Rail 1200 V, 2-pole, for line protection in photovoltaic systems

Technical data:

Description	Unit	Value
Electrical parameters		
Compatible with NH fuse-links according to IEC 60269-6	Size	3L and 2XL
Rated operational current I_e 1200 V	A	400
Vonventional free-air thermic current I_{th}	A	400
Rated operational voltage U_e	V	DC 1200
Rated insulation voltage U_i	V	DC 1200
Rated impulse withstand voltage U_{imp}	kV	8
Rated conditional short-circuit current (when protected by NH fuse-links) 1200 V	kA	30
Permissible ambient temperature T_{amb}	°C	-25 to + 55
Degree of protection DIN/EN 60529 / VDE 0470T1		IP1X *)
Max. power dissipation of NH fuse-link P_a	W	46
Total power dissipation (devices without fuse-links)	W	400 A – 41,7
Degree of soiling		3
Overvoltage category		III
Weight without NH fuse-links	kg	3,6
Terminal connection		
Flat connection		M12
Cable lug (DIN 43625)	mm ²	1 x 25-240
Flat bar	mm	30 x 10
Tightening torque M_a	Nm	32-40

*) with PV rail safety cover IP2X